

- Ashbourne At The Polo Club -

-Lying In Section 35 Township 46 South, Range 42 East-
Being A Replat Of Part Of Tract III, The Polo Club Plat 1, (Plat Book 52, Pages 35 and 36), Public Records, Palm Beach County, Florida

119

State of Florida)

County of Palm Beach)

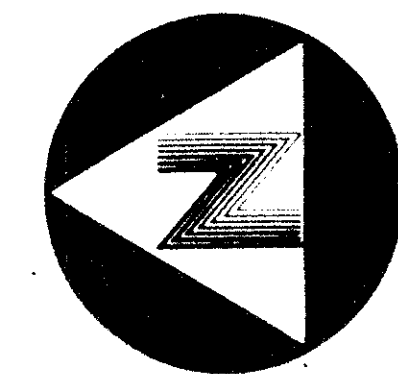
This Plat was filed for record at this day of A.D., 1987 and duly recorded in Plat Book on Pages thru

John B. Dunkle,
Clerk of the Circuit Court.

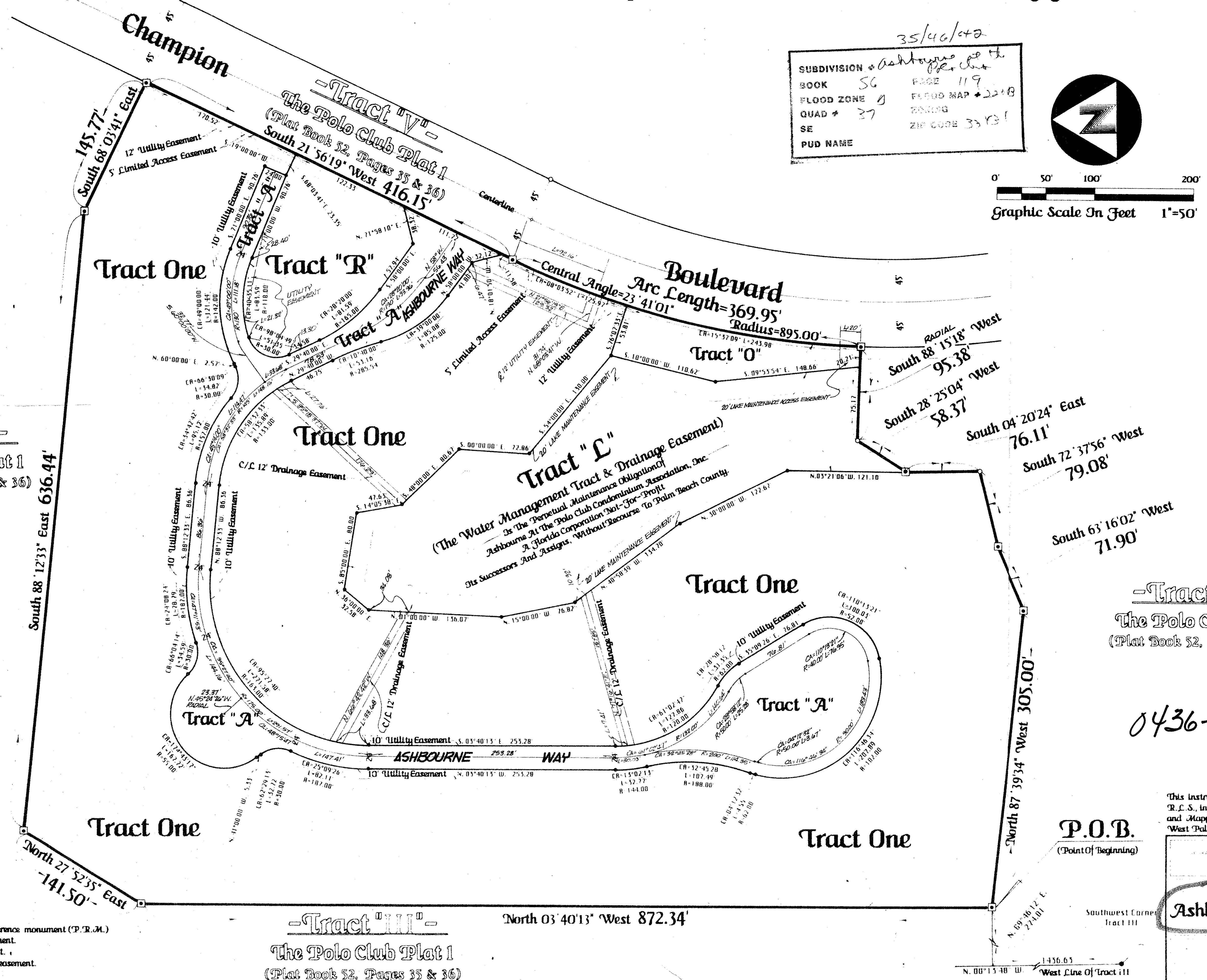
By: Deputy Clerk

35/46/42

SUBDIVISION	Ashbourne at the Polo Club
BOOK	56
FLOOD ZONE	0
QUAD #	37
SE	2nd CORN 33131
PUD NAME	



0' 50' 100' 200'
Graphic Scale In Feet 1"=50'



-Tract "III"-
The Polo Club Plat 1
(Plat Book 52, Pages 35 & 36)

-Tract "II"-
The Polo Club Plat 1
(Plat Book 52, Pages 35 & 36)

-Tract "III"-
The Polo Club Plat 1
(Plat Book 52, Pages 35 & 36)

Legend :

- - Denotes a permanent reference monument (P.R.M.)
- D.E. - Denotes a drainage easement.
- U.E. - Denotes a utility easement.
- L.A.E. - Denotes a limited access easement.

0436-015.

56/119

This instrument was prepared by Wm. R. Van Campen, R.L.S., in and for the offices of Bench Mark Land Surveying and Mapping, Inc., 50 South Military Trail, Suite 200, West Palm Beach, Florida, 33415. Phone: (305) 689-2111.

P.O.B.
(Point Of Beginning)

Record Plat
Ashbourne At The Polo Club

PLAN HOLD CORPORATION • IRVINE, CALIFORNIA
REGISTERED BY NUMBER 07534